

Mower Lift and Cleaning Instructions

Mowers are responsible for cleaning the deck after mowing. Forty pounds of dried grass were removed from the Zero-turn mower at the end of the season last year. The mower will cut better and more efficiently if kept clean. The club has installed a lift on the runway side of the container to facilitate cleaning. The instructions below are for cleaning the zero-turn mower. The instructions will be amended when procedures for the Craftsman mower are developed.

1. There is a canvas tarp in the shed. Spread this out next to the container between the wench and the locating blocks.
2. Make sure the blades are disengaged, and set as high as possible.
3. Pull the mower over the tarp, as close to the container as you can get it.
4. Stop when the rear wheel is between the locating blocks. See Fig 1 (over)
Note: the right hand gas tank will align with the end of the fold down table.
5. Stop and turn off mower, but do not set the brake.
6. Unlock the chain around the winch handle. Keys are on a clothes pin clipped to the info bracket on the container side wall.
7. Roll out a bit of cable and remove the hook from the storage hole. Keep tension in the cable as you roll it out.
8. Hook the cable to the inner-most lifting eye next to the right front wheel.
9. Crank the mower up until the stop is back at the wench.
10. Hook the safety chain to the outer-most lifting eye.
11. Lower the mower just enough to take the slack out of the chain.
12. It is now safe to clean the clipping form under the deck. Use a flat crow-bar located in the shed. The clippings will fall onto the tarp.
13. Once clean, raise the mower to unhook the safety chain. Store the chain behind its keeper.
14. Lower the mower and unhook the lift cable.
15. Maintain tension on the cable as you reel it in. Hook the cable into the storage hole and snug up the cable.
16. Secure the wench handle with the short chain and lock.
17. Return the lock key and crow bar to the container.
18. Check and remove any grass clippings from the fan grille on top of the motor.
19. Store the mower in the container.
20. Drag the tarp to a suitable location (road side ditch) to dump the grass clippings.
21. Store the tarp in the container.
22. Secure the container.

As always, thank you for doing your part to keep the field the nicest in the area.

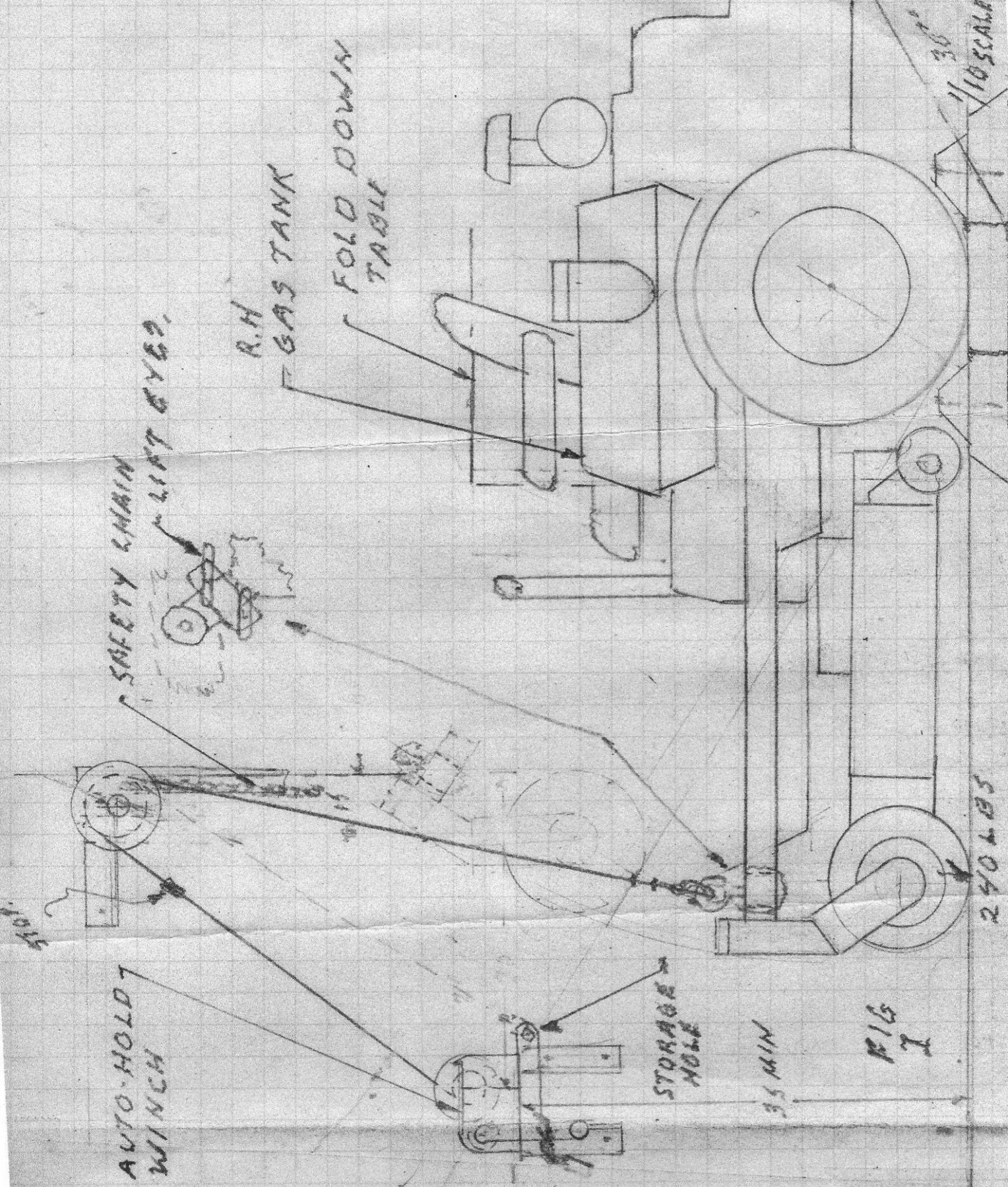


FIG I